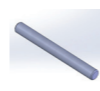


Type	Staatstuk/ Tailpiece	Motor code	Motor type	Schroef/ Prop	Relais/ Relay	Zink anode	Koppeling/ Coupling	Pen/ Key	Temp switch	Koolborstel/ Carbon Brush	Koolborstel/ Carbon Brush	Koolborstel/ Carbon Brush	Pakking/ Gasket	Tussenflens/ Intermediate flange	NIP = Not in Product NLA = No longer available	
Code	Code	Code	Type	Code	Code	Code	Code	Code	Code	Code	Dimensions	Type				
BOW2312	NLA (SET0113)	SET0228	MBT114M	BP90S	BP94	NLA	SET0010	BP89	NIP	ALEX17	12,5x8x25		BP203	BP202	Out of Catalogue	1995
BOW2312 TOT 5-95	NLA (SET0113)	SET0228	MBT114M	BP90S	BP94	ZINK02C	SET0010	BP89	NIP	SET0023	12,5x8x25	A125	BP203	BP202	Out of Catalogue	1995
BOW2312 TOT 2-97	NLA (SET0113)	SET0228	MBT114M	BP90S	BP94	ZINK02C	SET0010	BP89	NIP	NLA (BP243)	8x12,5x8		BP203	BP202	Out of Catalogue	1997
BOW2312A	NLA (SET0113)	SET0228	MBT1141M/B11214	BP90S	SET0009	SET0153	SET0010	BP89	NIP	AL100	26x9x26		BP203	BP202	Out of Catalogue	2000
BOW2512	SET0011	SET0228	11216252	SET0086	SET0009	SET0148	SET0010	BP1168	NIP	BP1187	9x25x13	01M	BP1170	BP1148	Out of Catalogue	1995
BOW2512B	SET0011	SET0228	11216252	SET0086	SET0009	SET0148	SET0010	BP1168	NIP	BP1187	9x25x13		BP1170	BP1148	Out of Catalogue	1995
BOW2512C	SET0011	SET0228	11216252	SET0086	SET0009	SET0148	SET0010	BP1168	NIP	BP1187	9x25x13		BP1170	BP1148	Out of Catalogue	2014
BOW2512D	SET0011	SET0228	11216252	SET0086	SET0009	SET0148	SET0010	BP1168	TS105	BP1187	9x25x13		BP1170	BP1148B	Out of Catalogue	2018
BOW2512DI	SET0011	SET0228	11216252	SET0086	SET0009	SET0148	SET0010	BP1168	TS105	BP1187	9x25x13		BP1170	BP1148B	Out of Catalogue	2018
BOW2512E	SET25TP	SET0228		SET0086	SOL2535E	SET0148	BP167087	BP1168	TS2535E	CB2535E	15x9x26		BP1170	BP179773	actual	2019
BOW2512EI	SET25TP	SET0228		SET0086	SOL2535E	SET0148	BP167087	BP1168	TS2535E	CB2535E	15x9x26		BP1170	BP179992 (available on request)	actual	2019
BOW3512	SET0017	SET0228		SET0087	SET0009	SET0149	SET0022	BP1019	NIP	SET0023	12,5x8x25	A125	BP1020	BP1034B	Out of Catalogue	1995
BOW3512	SET0017	SET0228	11216260	SET0087	SET0009	SET0149	SET0022	BP1019	NIP	BP1187	9x25x13		BP1020	BP1034B	Out of Catalogue	1995
BOW3512B	SET0017	SET0228	11216260	SET0087	SET0009	SET0149	SET0022	BP1019	NIP	BP1187	9x25x13		BP1020	BP1034B	Out of Catalogue	1995
BOW3512C	SET0017	SET0228	11216260	SET0087	SET0009	SET0149	SET0022	BP1019	NIP	BP1187	9x25x13		BP1020	BP1034B	Out of Catalogue	2014
BOW3512D	SET0017	SET0228	11216260	SET0087	SET0009	SET0149	SET0022	BP1019	TS105	BP1187	9x25x13		BP1020	BP1034B	Out of Catalogue	2018
BOW3512DI	SET0017	SET0228	11216260	SET0087	SET0009	SET0149	SET0022	BP1019	TS105	BP1187	9x25x13		BP1020	BP1034B	Out of Catalogue	2018
BOW3512E	SET0078	SET0228		SET0087	SOL2535E	SET0149	BP167087	BP1019	TS2535E	CB2535E	15x9x26		BP1020	BP179777	actual	2019
BOW3512EI	SET0078	SET0228		SET0087	SOL2535E	SET0149	BP167087	BP1019	TS2535E	CB2535E	15x9x26		BP1020	BP179994 (available on request)	actual	2019
BOW3512F (125mm tunnel)	SET0226	SET0228		SET0225	SOL2535E	SET0149	BP167087	BP1019	TS2535E	CB2535E	15x9x26		BP1020	BP1711302	actual	2019
BOW3512FI	SET0226	SET0228		SET0087	SOL2535E	SET0149	BP167087	BP1019	TS2535E	CB2535E	15x9x26		BP1020	BP1711742	actual	2019
BOW4012	SET0289	SET0228	AMJ4757	SET0288	SOL2535E	SET0149	BP167087	BP1019	TS2535E	CB2535E	15x9x26		BP1020	BP179777	Expected	2021
BOW4512C	SET0226	SET0060		SET0089	SET0015	SET0149	BP1202	BP1019	NIP	SET0126	9 x 20 x 28,5		BP1020	NLA (BP4504)	Out of Catalogue	2014
BOW4512D	SET0226	SET0060		SET0225	SET0015	SET0149	BP1202	BP1019	TS110A	SET0126	9 x 20 x 28,5		BP1020	BP4504B	actual	2019
BOW4512DI	SET0226	SET0060		SET0225	SET0015	SET0149	BP1202	BP1019	TS110A	SET0126	9 x 20 x 28,5		BP1020	BP4504B1	actual	2019
BOW5012 TOT 6-86	NLA (BP276)	NLA (BP812)	(BP01) R125/3-514/511	SET0089	SET0015	SET0153	BP134	BP381 12,2MM	NIP	BP60	10x25	C843 (M70)	NLA	NLA	Out of Catalogue	1986
BOW5012 TOT 3-93	NLA (BP276)	NLA (BP812)	(BP01A) TF12	SET0089	SET0015	SET0153	BP134	BP381 12,2MM	NIP	BP60A	8x32x25	CG6535(MH63)	NLA	NLA	Out of Catalogue	1993
BOW5012 TOT 4-95	NLA (BP276)	NLA (BP812)	(BP01A) 341-85-021	SET0089	SET0015	SET0153	BP134	BP381 12,2MM	NIP	BP20912	9,5x30x26	MH35C	NLA	NLA	Out of Catalogue	1995
BOW5012 TOT 8-00	NLA (BP276)	NLA (BP812)	R125/3-677-633	SET0088	SET0015	SET0153	BP134	BP275 13,7MM	NIP	BP261	20x9x27,5	CU25M	NLA	NLA	Out of Catalogue	2000
BOW5024 TOT 6-86	NLA (BP276)	NLA (BP824)	(BP0124) R125/3-514/512	SET0089	SET0020	SET0153	BP134	BP381 12,2MM	NIP	BP60A	8x32x25	M191 (M70)	NLA	NLA	Out of Catalogue	1986
BOW5024 TOT 3-93	NLA (BP276)	NLA (BP824)	(BP0124A) TF12	SET0089	SET0020	SET0153	BP134	BP381 12,2MM	NIP	BP60A	8x32x25	EG98(MH63)	NLA	NLA	Out of Catalogue	1993
BOW5024 TOT 4-95	NLA (BP276)	NLA (BP824)	(BP0124A) 341-85-022	SET0089	SET0020	SET0153	BP134	BP381 12,2MM	NIP	BP20912	9,5x30x26	MH35C	NLA	NLA	Out of Catalogue	1995
BOW5024 TOT 8-00	NLA (BP276)	NLA (BP824)	R125/3-677/634	SET0088	SET0020	SET0153	BP134	BP275 13,7MM	NIP	BP261	20x9x27,5	CM9/CU50M	NLA	NLA	Out of Catalogue	2000
BOW5512 TOT 11-04	SET0078	SET0060	R125/3-633 TSL125	SET0087	SET0015	SET0149	BP1023	BP1019	NIP	BP261	20x9x27,5	CU25M	BP1020	BP1022	Out of Catalogue	2004
BOW5512A TOT 5-06	SET0078	SET0060	EC3/1.2/29	SET0087	SET0015	SET0149	BP1202	BP1019	NIP	SET0126	9x20x28,5	3-21-23-0032	BP1020	NLA (BP1272)	Out of Catalogue	2006
BOW5512B	SET0078	SET0060	EC3/1.2/29	SET0087	SET0015	SET0149	BP1202	BP1019	NIP	SET0126	9x20x28,5	3-21-23-0032	BP1020	NLA (BP1272)	Out of Catalogue	2012
BOW5512C	SET0078	SET0060	EC3/1.2/29	SET0087	SET0015	SET0149	BP1202	BP1019	NIP	SET0126	9x20x28,5		BP1020	NLA (BP1272)	Out of Catalogue	2014
BOW5512D	SET0078	SET0060	EC3/1.2/29	SET0087	SET0015	SET0149	BP1202	BP1019	TS110A	SET0126	9x20x28,5		BP1020	BP1272B	actual	2019
BOW5512DI	SET0078	SET0060	EC3/1.2/29	SET0087	SET0015	SET0149	BP1202	BP1019	TS110A	SET0126	9x20x28,5		BP1020	BP1351B	actual	2019
BOW5524 TOT 11-04	SET0078	SET0108	R125/3-633 TSL125	SET0087	SET0020	SET0149	BP1023	BP1019	NIP	BP261	20x9x27,5	25M-30	BP1020	BP1022	Out of Catalogue	2004
BOW5524A TOT 5-06	SET0078	SET0108	EC/2.4/33	SET0087	SET0020	SET0149	BP1202	BP1019	NIP	SET0127	11x25x28,5	3-21-25-0196	BP1020	NLA (BP1272)	Out of Catalogue	2006
BOW5524B	SET0078	SET0108	EC/2.4/33	SET0087	SET0020	SET0149	BP1202	BP1019	NIP	SET0127	11x25x28,5	3-21-25-0196	BP1020	NLA (BP1272)	Out of Catalogue	2012
BOW5524C	SET0078	SET0108	EC/2.4/33	SET0087	SET0020	SET0149	BP1202	BP1019	NIP	SET0127	11x25x28,5	3-21-25-0196	BP1020	NLA (BP1272)	Out of Catalogue	2014
BOW5524CI	SET0078	SET0108	EC/2.4/33	SET0087	SET0020	SET0149	BP1202	BP1019	NIP	SET0127	11x25x28,5	3-21-25-0196	BP1020	NLA (BP1272)	Out of Catalogue	2014
BOW5524D	SET0078	SET0108	EC/2.4/33	SET0087	SET0020	SET0149	BP1202	BP1019	TS110A	SET0127	11x25x28,5	3-21-25-0196	BP1020	BP1272B	actual	2019
BOW5524DI	SET0078	SET0108	EC/2.4/33	SET0087	SET0020	SET0149	BP1202	BP1019	TS110A	SET0127	11x25x28,5	3-21-25-0196	BP1020	BP1351B	actual	2019
BOW6012	SET0046	SET0060	R125-633	SET0088	SET0015	SET0150	BP1202	BP275	NIP	BP261	20x9x27,5	CU25M	BP1020	BP1302B	Out of Catalogue	2006
BOW6012B	SET0046	SET0060	EC3/1.2/29	SET0088	SET0015	SET0150	BP1202	BP275	NIP	SET0126	9x20x28,5	3-21-23-0032	BP1020	BP1302B	Out of Catalogue	2012
BOW6012C	SET0046	SET0060	EC3/1.2/29	SET0088	SET0015	SET0150	BP1202	BP275	NIP	SET0126	9x20x28,5		BP1020	BP1302B	Out of Catalogue	2014
BOW6012D	SET0046	SET0060	EC3/1.2/29	SET0088	SET0015	SET0150	BP1202	BP275	NIP	SET0126	9x20x28,5		BP1020	BP1199B	actual	2019
BOW6024	SET0046	SET0108	R125-634	SET0088	SET0020	SET0150	BP1202	BP275	NIP	BP261	20x9x27,5	25M-30	BP1020	BP1302B	Out of Catalogue	2006
BOW6024B	SET0046	SET0108	EC/2.4/33	SET0088	SET0020	SET0150	BP1202	BP275	NIP	SET0127	11x25x28,5	3-21-25-0196	BP1020	BP1302B	Out of Catalogue	2012
BOW6024C	SET0046	SET0108	EC/2.4/33	SET0088	SET0020	SET0150	BP1202	BP275	NIP	SET0127	11x25x28,5		BP1020	BP1302B	Out of Catalogue	2014
BOW6024D	SET0046	SET0108	EC/2.4/33	SET0088	SET0020	SET0150	BP1202	BP275	NIP	SET0127	11x25x28,5		BP1020	BP1199B	actual	2019



Type	Staatstuk/ Tailpiece	Motor code	Motor type	Schroef/ Prop	Relais/ Relay	Zink anode	Koppeling/ Coupling	Pen/ Key		Koolborstel/ Carbon Brush	Koolborstel/ Carbon Brush	Koolborstel/ Carbon Brush	Pakking/ Gasket	Tussenflens/ Intermediate flange	NIP = Not in Product NLA = No longer available	
Code	Code	Code	Type	Code	Code	Code	Code	Code	Code	Code	Dimensions	Type				
BOW7512	SET0035	SET0031	TSL125A-681	SET0088	SET0015	SET0150	BP1202	BP275	NIP	SET0029	9x30x28		BP1020	BP1199B	Out of Catalogue	2006
BOW7512B	SET0035	SET0031	EC4.4/1.2/29	SET0088	SET0015	SET0150	BP1202	BP275	NIP	SET0126	9x20x28,5	3-21-23-0032	BP1020	BP1199B	Out of Catalogue	2012
BOW7512C	SET0035	SET0031	EC4.4/1.2/30	SET0088	SET0015	SET0150	BP1202	BP275	NIP	SET0126	9x20x28,5	3-21-23-0032	BP1020	BP1199B	Out of Catalogue	2014
BOW7512D	SET0035	SET0031		SET0088	SET0015	SET0150	BP1202	BP275	TS110A	SET0126	9x20x28,5		BP1020	BP1199B	actual	2019
BOW7512DI	SET0035	SET0031		SET0088	SET0015	SET0150	BP1202	BP275	TS110A	SET0126	9x20x28,5		BP1020	BP1326B	actual	2019
BOW7524	SET0035	SET0109	TSL125A	SET0088	SET0020	SET0150	BP1202	BP275	NIP	SET0030	9x20x25		BP1020	BP1199B	Out of Catalogue	2006
BOW7524B	SET0035	SET0109	EC4.4/2.4/29	SET0088	SET0020	SET0150	BP1202	BP275	NIP	SET0127 (8X)	11x25x28,5	3-21-25-0196	BP1020	BP1199B	Out of Catalogue	2012
BOW7524C	SET0035	SET0109	EC4.4/2.4/30	SET0088	SET0020	SET0150	BP1202	BP275	NIP	SET0127 (8X)	11x25x28,5	3-21-25-0196	BP1020	BP1199B	Out of Catalogue	2014
BOW7524D	SET0035	SET0109		SET0088	SET0020	SET0150	BP1202	BP275	TS110A	SET0127 (8X)	11x25x28,5		BP1020	BP1199B	actual	2019
BOW7524DI	SET0035	SET0109		SET0088	SET0020	SET0150	BP1202	BP275	TS110A	SET0127 (8X)	11x25x28,5		BP1020	BP1326B	actual	2019
BOW8024	BP8165	NLA (BP26924)	R160/4.7-9/7	SET0088	SET0020	SET0150	BP2285	BP381	NIP	SET0040	48x12x32		BP05	BP224	Out of Catalogue	2002
	BP8165	NLA	EC4.7/1.2/36	SET0088	SET0020	SET0150	BP2285	BP275	NIP	SET0056	12,5x20x28,5	M65	BP1020	BP1047	Out of Catalogue	2002
BOW9512	SET0046	SET0041	TSL150-861	SET0088	SET0111	SET0150	BP1202	BP275	NIP	SET0040	12,5x48x32		BP1020	BP1199B	Out of Catalogue	2006
BOW9512B	SET0046	SET0041	EC 5.7/1.2/39-02	SET0088	SET0111	SET0150	BP1202	BP275	NIP	SET0128	12,5x31x20	3-21-04-0098	BP1020	BP1199B	Out of Catalogue	2012
BOW9512C	SET0046	SET0041	EC 5.7/1.2/39-02	SET0088	SET0111	SET0150	BP1202	BP275	NIP	SET0128	12,5x31x20	3-21-04-0098	BP1020	BP1199B	Out of Catalogue	2014
BOW9512D	SET0046	SET0041	EC 5.7/1.2/39-02	SET0088	SET0111	SET0150	BP1202	BP275	TS95B	SET0128	12,5x31x20	3-21-04-0098	BP1020	BP1199B	actual	2019
BOW952DE (ER)	SET0046	BP3016E	EC 5.7/1.2/39-02	SET0088	SET0111	SET0150	BP1202E	BP275	TS95B	SET0128	12,5x31x20	3-21-04-0098	BP1020	BP9550EB	actual	2019
BOW9512DI	SET0046	SET0041	EC 5.7/1.2/39-02	SET0088	SET0111	SET0150	BP1202E	BP275	TS95B	SET0128	12,5x31x20	3-21-04-0098	BP1020	BP1326B	actual	2019
BOW9524	SET0046	SET0110	TSL150-861	SET0088	SET0044	SET0150	BP1202	BP275	NIP	SET0040	12,5x48x32		BP1020	BP1199B	Out of Catalogue	2006
BOW9524B	SET0046	SET0110	EC 5.7/2.4/39-02	SET0088	SET0044	SET0150	BP1202	BP275	NIP	SET0129	10x31x20	3-21-03-0198	BP1020	BP1199B	Out of Catalogue	2012
BOW9524C	SET0046	SET0110	EC 5.7/2.4/39-02	SET0088	SET0044	SET0150	BP1202	BP275	NIP	SET0129	10x31x20	3-21-03-0198	BP1020	BP1199B	Out of Catalogue	2014
BOW9524D	SET0046	SET0110	EC 5.7/2.4/39-02	SET0088	SET0044	SET0150	BP1202	BP275	TS95B	SET0129	10x31x20	3-21-03-0198	BP1020	BP1199B	actual	2019
BOW954DE (ER)	SET0046	BP3017E	EC 5.7/2.4/39-02	SET0088	SET0044	SET0150	BP1202	BP275	TS95B	SET0129	10x31x20	3-21-03-0198	BP1020	BP9550EB	actual	2019
BOW9524DI	SET0046	SET0110	EC 5.7/2.4/39-02	SET0088	SET0044	SET0150	BP1202	BP275	TS95B	SET0129	10x31x20	3-21-03-0198	BP1020	BP1326B	actual	2019
BOW11024	SET0080	SET0079	136 602 031(BP115)	SET0090	SET0044	SET0151	BP117	GLA2503	NIP	NLA			NLA	NLA	Out of Catalogue	2006
BOW12512	SET0163	SET0159	(BP1212)	SET0090	SET0186	SET0151	BP1321	GLA2503	NIP	SET0040	12,5x48x32		BP118	BP1302B	Out of Catalogue	2006
BOW12512B	SET0163	SET0159	EC 5.7/1.2/39-02	SET0090	SET0186	SET0151	BP1321	GLA2503	NIP	SET0128	12,5x31x20	3-21-04-0098	BP118	BP1302B	Out of Catalogue	2012
BOW12512C	SET0163	SET0159	EC 5.7/1.2/39-02	SET0090	SET0186	SET0151	BP1321	GLA2503	NIP	SET0128	12,5x31x20	3-21-04-0098	BP118	BP1302B	Out of Catalogue	2014
BOW12512D	SET0163	SET0159	EC 5.7/1.2/39-02	SET0090	SET0186	SET0151	BP1321	GLA2503	TS95B	SET0128	12,5x31x20	3-21-04-0098	BP118	BP1320B	actual	2019
BOW1252DE	SET0163	BP3016E	EC 5.7/1.2/39-02	SET0090	SET0186	SET0151	BP117	GLA2503	TS95B	SET0128	12,5x31x20	3-21-04-0098	BP118	BP194B	actual	2019
BOW1252DI	SET0163	SET0159	EC 5.7/1.2/39-02	SET0090	SET0186	SET0151	BP1321	GLA2503	TS95B	SET0128	12,5x31x20	3-21-04-0098	BP118	BP1326B	actual	2019
BOW12524	SET0163	SET0160	(BP1224)	SET0090	SET0044	SET0151	BP1321	GLA2503	NIP	SET0040	12,5x48x32		BP118	BP1302B	Out of Catalogue	2006
BOW12524B	SET0163	SET0160	(BP1224)	SET0090	SET0044	SET0151	BP1321	GLA2503	NIP	SET0129	12,5x48x32		BP118	BP1302B	Out of Catalogue	2012
BOW12524C	SET0163	SET0160	(BP1224)	SET0090	SET0044	SET0151	BP1321	GLA2503	NIP	SET0129	12,5x48x32		BP118	BP1302B	Out of Catalogue	2014
BOW12524D	SET0163	SET0160		SET0090	SET0044	SET0151	BP1321	GLA2503	TS95B	SET0129	12,5x48x32		BP118	BP1320B	actual	2019
BOW1254DE	SET0163	BP3017E		SET0090	BP37424	SET0151	BP117	GLA2503	TS95B	SET0129	12,5x48x32		BP118	BP194B	actual	2019
BOW1254DI	SET0163	BP3017		SET0090	SET0044	SET0151	BP1321	GLA2503	TS95B	SET0129	12,5x48x32		BP118	BP1362B	actual	2019
BOW13024	SET0080	SET0079	R178 (BP239) (BP4633)	SET0090	SET0044	SET0151	BP117	GLA2503	NIP	SET0040	48x12x32	VM18	NLA	NLA	Out of Catalogue	2001
BOW16024	SET0080	SET0079	84633 (BP239A)	SET0090	SET0044	SET0151	BP117	GLA2503	NIP	BP233	10x25x32	C51	BP118	BP194B	Out of Catalogue	2006
BOW16024A	SET0080	SET0079	TSL178A-676 (BP305)	SET0090	SET0044	SET0151	BP117	GLA2503	NIP	SET0040	48x12x32		BP118	BP194B	Out of Catalogue	2006
BOW16024B	SET0080	SET0079	EC 7/2.4/26	SET0090	SET0044	SET0151	BP117	GLA2503	NIP	SET0130	12,5x28x20	3-21-19-0195	BP118	BP194B	Out of Catalogue	2012
BOW16024C	SET0080	SET0079	EC 7/2.4/26	SET0090	SET0044	SET0151	BP117	GLA2503	NIP	SET0130	12,5x28x20		BP118	BP194B	Out of Catalogue	2014
BOW16024D	SET0080	SET0079	EC 7/2.4/26	SET0090	SET0044	SET0151	BP117	GLA2503	TS95A	SET0130	12,5x28x20		BP118	BP194B	actual	2019
BOW1604DE	SET0080	BP3018E		SET0090	SET0044	SET0151	BP117E	GLA2503	TS95A	SET0130	12,5x28x20		BP118	BP194EB	actual	2019
BOW1604DI	SET0080	BP3018E	EC 7/2.4/26	SET0090	SET0044	SET0151	BP117	GLA2503	TS95A	SET0130	12,5x28x20		BP118	BP15076B (available on request)	actual	2019
BOW18024D	SET0080	BP3018E	EC 7/2.4/26	SET0090	SET0044	SET0151	BP117E	GLA2503	TS110B	SET0130	12,5x28x20		BP118	BP194EB	actual	2019
BOW22024	SET0165	NLA	(BP1077) TSL210B	BP1053	SET0176	SET0152	BP1074	GLA2503	n/a	SET0057	12,5x48x32		BP1069	BP1076B	Out of Catalogue	2002
	BP1010		EC 11/2.4/20	BP1053	SET0176	SET0152	BP1074	GLA2503	n/a	SET00131	12,5x32x20	3-21-04-0198	BP1069	BP1076B	Out of Catalogue	2002
BOW22024B	SET0165	BP1010	EC 11/2.4/20	BP1053	SET0176	SET0152	BP1074	GLA2503	n/a	SET00131	12,5x32x20		BP1069	BP1076B	Out of Catalogue	2006
BOW22024C	SET0165	BP1010	EC 11/2.4/20	BP1053	SET0176	SET0152	BP1074	GLA2503	n/a	SET00131	12,5x32x20		BP1069	BP1076B	Out of Catalogue	2012
BOW22024D	SET0165	BP1010E	11kw 24v	BP1053	SET0176	SET0152	BP1074	GLA2503	TS110B	SET00131	12,5x32x20		BP1069	BP1076B	actual	2019
BOW2204DE	SET0165	BP1010E		SET0171	SET0176	SET0152	BP1074	GLA2503	TS110B	SET00131	12,5x32x20		BP1069	BP1076B	actual	2019
BOW28548	SET0165	BP3006	EC 17.5/4.8/24	BP1053	SET0176	SET0152	BP1074	GLA2503	n/a	SET0132	10x30x20	3-21-03-0298	BP1069	BP1076B	Out of Catalogue	2006
BOW28548B	SET0165	BP3006	EC 17.5/4.8/24	BP1053	SET0176	SET0152	BP1074	GLA2503	n/a	SET0132	10x30x20		BP1069	BP1076B	Out of Catalogue	2012
BOW28548C	SET0165	BP3006	EC 17.5/4.8/24	BP1053	SET0176	SET0152	BP1074	GLA2503	n/a	SET0132	10x30x20		BP1069	BP1076B	Out of Catalogue	2014
BOW28548D	SET0165	BP3006	EC 17.5/4.8/24	BP1053	SET0176	SET0152	BP1074	GLA2503	TS95A	SET0132	10x30x20		BP1069	BP1076B	actual	2019

Hydr. Thrusters	Staartstuk/ Tailpiece	Motor code	Schroef/ Prop	Zink anode	Koppeling/ Coupling	Pen/ Key	Pakking/ Gasket	Tussenflens/ Intermediate flange	NIP = Not in Product NLA = No longer available	
Code	Code	Code	Code	Code	Code	Code	Code	Code		
BOW55HM	SET0078	HT5420	SET0087	SET0149	BP1262	BP1129	BP1020	BP1272B	actual	2014
BOW95HM	SET0046	HT5420	SET0088	SET0150	BP1262	BP275S	BP118	BP1326B	actual	2014
BOW110HM	NLA	NLA	SET0090	SET0151	BP117	NLA	NLA	BP194	Out of Catalogue	2006
BOW160HM	SET0080	HT5421	SET0090	SET0151	BP117	GLA2503	BP118	BP194B	actual	2014
BOW230HM	SET0165	HT5504	BP1053 (Bronze) SET0171 (Plastic)	SET0152 (Bronze) SET0221 (Plastic)	BP1115	GLA2503	BP1069	BP1076B	actual	2014
BOW310HM	SET0165	HT5422	BP1182 (Bronze) SET0171 (Plastic)	SET0152 (Bronze) SET0221 (Plastic)	BP1115	GLA2503	BP1069	BP1076B	actual	2014
BOW410HM	BP1311	NLA	BP1259	SET0075	NLA	NLA	NLA	NLA	Out of Catalogue	2019
BOW550HM	BP1311	NLA	BP1260	SET0075	NLA	NLA	NLA	NLA	Out of Catalogue	2020

Type	Staartstuk/ Tailpiece	Motor code	Motor type	Schroef/ Prop	Relais/ Relay	Zink anode	Koppeling/ Coupling	Pen/ Key	Zekering/ Fuse	Kartelmoeren/ Knobs	Behuizing/ Housing	Regelaar/ Controller	Pakking/ Gasket	Tussenflens/ Intermediate flange	NIP = Not in Product NLA = No longer available	
12 VOLT																
BOWA0301 (12V)	SET25TP	VP000017	8 VAC	DM80017		SET0148	BP167087	BP1168	BP256	SET0006	BPACCSU	VP000201	BP1170		actual	2019
BOWA0361 (12V)	SET0226	VP000017	8 VAC	DM80018		SET0149	BP1202	BP1019	BP256	SET0006	BPACCSU	VP000203	BP1020		actual	2019
BOWA0421 (12V)	SET0226	VP000018	8 VAC	DM80018		SET0149	BP1202	BP1019	BP256	SET0006	BPACCSU	VP000205	BP1020		actual	2019
BOWA0571 (12V)	SET0078	VP000018	8 VAC	DM80019		SET0149	BP1202	BP1019	BP256	SET0006	BPACCSU	VP000206	BP1020		actual	2019
BOWA0651 (12V)	SET0046	VP000018	8 VAC	DM80020		SET0150	BP1202	BP275	BP256	SET0006	BPACCSU	VP000209	BP1020		actual	2019
BOWA0761 (12V)	SET0046	VP000018	8 VAC	DM80020		SET0150	BP1202	BP275	BP256	SET0006	BPACCSU	VP000210	BP1020		actual	2019
BOWA0572 (24V)	SUBSTITUTION BOWB057	NLA	NLA	NLA		NLA	NLA	NLA	NLA	NLA	NLA	NLA	VP000207		Out of Catalogue	2019
BOWA0762 (24V)	SUBSTITUTION BOWB076	NLA	NLA	NLA		NLA	NLA	NLA	NLA	NLA	NLA	NLA	NLA		Out of Catalogue	2019
48 VOLT																
BOWA0364 (48V)	DM80010	AC08012	8 VAC	DM80018		SET0149	BP1202	BP1019	BP256	SET0006	BPACCSU	MCV25048C	BP1020		actual	2019
BOWA0574 (48V)	DM80011	AC15031	15 VAC	DM80019		SET0149	BP1202	BP1019	BP256	SET0006	BPACCSU	MCV25048C	BP1020		actual	2019
BOWA0764 (48V)	SET0046	AC15031	15 VAC	DM80020		SET0150	BP1202	BP275	BP256	SET0006	BPACCSU	MCV25048C	BP1020		actual	2019
BOWB057 (12-24V)	DM80011	AC15031	15 VAC	DM80019		SET0149	BP1202	BP1019	BP256	SET0006	BPACCSUB	MCV30024	BP1020		actual	2019
BOWB065 (12-24V)	SET0046	AC15031	15 VAC	DM80020		SET0150	BP1202	BP275	BP256	SET0006	BPACCSUB	MCV30024	BP1020		actual	2019
BOWB076 (12-24V)	SET0046	AC15031	15 VAC	DM80020		SET0150	BP1202	BP275	BP256	SET0006	BPACCSUB	MCV30024	BP1020		actual	2019
BOWB090 (12-24V)	SET0046	AC15057	15 VAC	DM80020		SET0150	BP1202	BP275	BP256	SET0006	BPACCSUB	MCV30024	BP1020		actual	2019
BOWB110	SET0046	AC15057	15 VAC	DM80020		SET0150	BP1202	BP275	BP256	SET0006	BPACCSUB	MCV30024	BP1020		actual	2019
BOWB130	SET0046	AC15057	15 VAC	DM80020		SET0150	BP1202	BP275	BP256	SET0006	BPACCSUB	MCV30024	BP1020		actual	2019
BOWB150	SET0163	AC15057	15 VAC	DM80021		SET0151	BP1321	GLA2503	BP256	SET0006	BPACCSUB	MCV30024	BP1020		actual	2019
BOWB180	SET0163	AC29011	29 VAC	DM80021		SET0151	BP1321AC	GLA2503	BP256	SET0006	BPACCSUB	MCV30024	BP1020		actual	2019
BOWB210	SET0163	AC29011	29 VAC	DM80021		SET0151	BP1321AC	GLA2503	BP256	SET0006	BPACCSUB	MCV30024	BP1020		actual	2019
BOWB250	Under development														expected	2021
BOWB285	Under development														expected	2021
BOWB300	Under development														expected	2021
BOWB320	Under development														expected	2021